



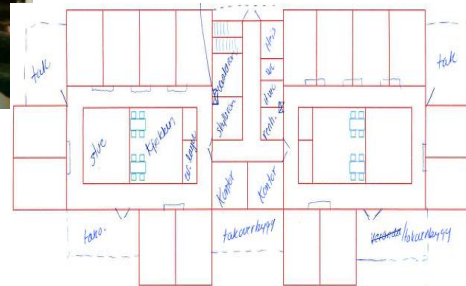
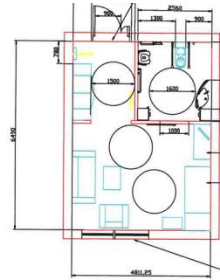
Leverandørdialog

Hva, hvorfor og hvordan?

- Definere behov
- Planlegge organisere
- Dialog med markedet
- Anbud
- Følge opp og evaluere

Definere behov

- Intervju med ulike brukergrupper
 - Pleiepersonell
 - Pasienter/beboere
 - Teknisk drift
 - Renholdere



	Technical staff	Cleaning staff	Assisted aid staff	Senior citizens	Nursing staff
Toilet		<ul style="list-style-type: none"> Shelves for toiletries in the wall of an adult (with container) Shelves in the wall for the diapers, towels etc. Good room. 	<ul style="list-style-type: none"> Gripping Bracket on the sink Fall Alarm Height adjustable sink automatic rinse / dry toilet Ability to retrofit toilet lift overhead lift in the ceiling Grab Handle 	<ul style="list-style-type: none"> Good light Shower, with good fall for direct water Grab handles around Wall Toilet with bidet Easy to get the soap in the shower Adjustable toilet Robot Fan / dry The importance of color to find the toilet Guide traces the floors to find washing of feet Store shelves and cabinets Adjustable wash Close to the bed 	<ul style="list-style-type: none"> Spaces Sliding High toilet, lift and lowered, with spray and wipe Create, space consuming equipment Plenty of space around the toilet Toilet seat that swivels overhead lift in the ceiling
Bed room	<ul style="list-style-type: none"> Hard wall, beside the bed, so prevent damages to the wall 	<ul style="list-style-type: none"> Hard wall, beside the bed, so prevent damages to the wall 	<ul style="list-style-type: none"> Sensor at bedside, integrated into wall (pressure, beam, fluid, epilepsy), ready for use, may be turned on by the staff overhead lift in ceiling Soundproof Supporting the bed which allows the patient to stand up 	<ul style="list-style-type: none"> Automatic adjustable bed Possible to set up windows / regulate the heat individually Adjustable light with sensor (night) Reading lights Cabinet Space / dresser Soundproofing Handrails from bed to toilet Robots serving cold water Sensor that record fall 	<ul style="list-style-type: none"> Adjustable temperature Aid to get out of bed Extra bed for visitors Ball Blankets overhead lift
Living room		<ul style="list-style-type: none"> curtain board must not be a dust collector cabinet that is not a part of the wall have to go up to the roof. 	<ul style="list-style-type: none"> The chime with sound and light overhead lift Grab Handle 	<ul style="list-style-type: none"> Integrated kitchenette with microwave Dishwasher Good lighting, automated, sensor Good floor space Adjustable furniture Wireless network Large tv Telephone 	<ul style="list-style-type: none"> Overhead lift in ceiling
Common rooms		<ul style="list-style-type: none"> Room for washing machine, machines, mops, sockets for charging machines 	<ul style="list-style-type: none"> If kitchen: stove guard Teleloop Lift and lower kitchen Dining area with good lighting Monitors with day, date and time, must be able to meakeativeres. Hand rails all the way along all the walls (formed in a pretty way?) 	<ul style="list-style-type: none"> Open kiosk / small shop / cafe Accommodation rooms for guests Spa / Hairdresser / Health Club Library / music / Senior Film Society Garden / Balcony sensory / healing gardens 	<ul style="list-style-type: none"> Cosy Circle Walking sensory / screening room Timeless color and decor Good light
Surfaces	<ul style="list-style-type: none"> Floors: plain surfaces depressant (something soft?) reduce the strain on the back / pelvis / hips maintenance friendly conduct heat (hydronic) Exterior: External surfaces do not require painting or other maintenance 	<ul style="list-style-type: none"> Floors: Vinyl (thick) - dries faster boning Washable slip resistant floor No baseboards 	<ul style="list-style-type: none"> All surfaces should dampen acoustics No crossies or thresholds anywhere All sockets must be assessed in relation to high on the wall. 	<ul style="list-style-type: none"> Non-slip flooring in bathrooms 	<ul style="list-style-type: none"> Automatic cleaning Floor prevent overuse injuries of the hip, lower back, etc.
Other areas	<ul style="list-style-type: none"> Automatic sliding doors Light control in any room Heat recovery of "gray water" for example, shower water Use of aerated concrete Blinds exterior or glass Threshold-free fire sectioning separation Solar cell panels - Plusshus Parking in basement 	<ul style="list-style-type: none"> Window: <ul style="list-style-type: none"> Rectangular window Self-cleaning window 	<ul style="list-style-type: none"> Covers for light switches that can be replaced (various colors) The entrance into the room should be large, space for utilities and charging station for electric utilities (at least 6 plugs) Sliding doors to all rooms with open doors Automatic light (sensor) Fire alarm with sound, light and vibration in bed All systems must be able to show an error Around the house there must be way (to avoid reversing the delivery and etc) garage (carport) to each apartment for scooter and the like). All tools must be able to notify the failure or that they need recharging 	<ul style="list-style-type: none"> Sliding Doors Automatic light Plenty of space for wheelchair in all rooms Automatic fuse closure of power Downfall / transition to the center Private bus stop at LBS Individual hiking path for manual and electric wheelchairs Outdoor area for walk in all weathers Restaurant System to ensure that all of good nutrition 	<ul style="list-style-type: none"> Good air / air condition / fans staff rooms: Good overview of department Place the online report Shielded room for oral report Small break room Centrally located Passcode Lock and Key Tracking of employees / where they are Two-way alarm system spa Centre for the elderly Output Doors with automatic locking, but the open door, or with camera (important that visitors feel welcome).

Planlegge organisere

- Dialog konferanse
 - Finne egnet sted
 - Invitasjon
 - Publisering
 - Ringerunder
 - Ta kontakt bransjeorganisasjoner
 - Fagblader
 - Doffin/TED

Gjennomførte konferanser

- Leverandørkonferanse i Lyngdal
 - Velferdsteknologi
- Pre – dialog møte i Brüssel
 - Invitasjon sendt ut til bransjeorganisasjoner
 - Forberede det Europeiske markedet
- Dialogkonferanse på Arlanda

Noen resultater

Trådløs trykghetspakke:

- Lys- og varmestyring
- Døralarm og døråpner
- Fallsensor og fallalarm
- Ulike sensorbaserte alarmer
- Komfyralarm
- Brannvarsler
- 2 veis billedkommunikasjon
- Medisineringsautomat
- Rengjøringsrobot
- Oversvømmelsesvarsel
- Kameratilsyn natt
- Spillkonsoll
- Ev. andre kognisjonshjelpemidler



Leverandørdialog

- Dialogkonferanse
 - Presentasjon av behov
 - Speed date med de ulike firma



Utfordringer

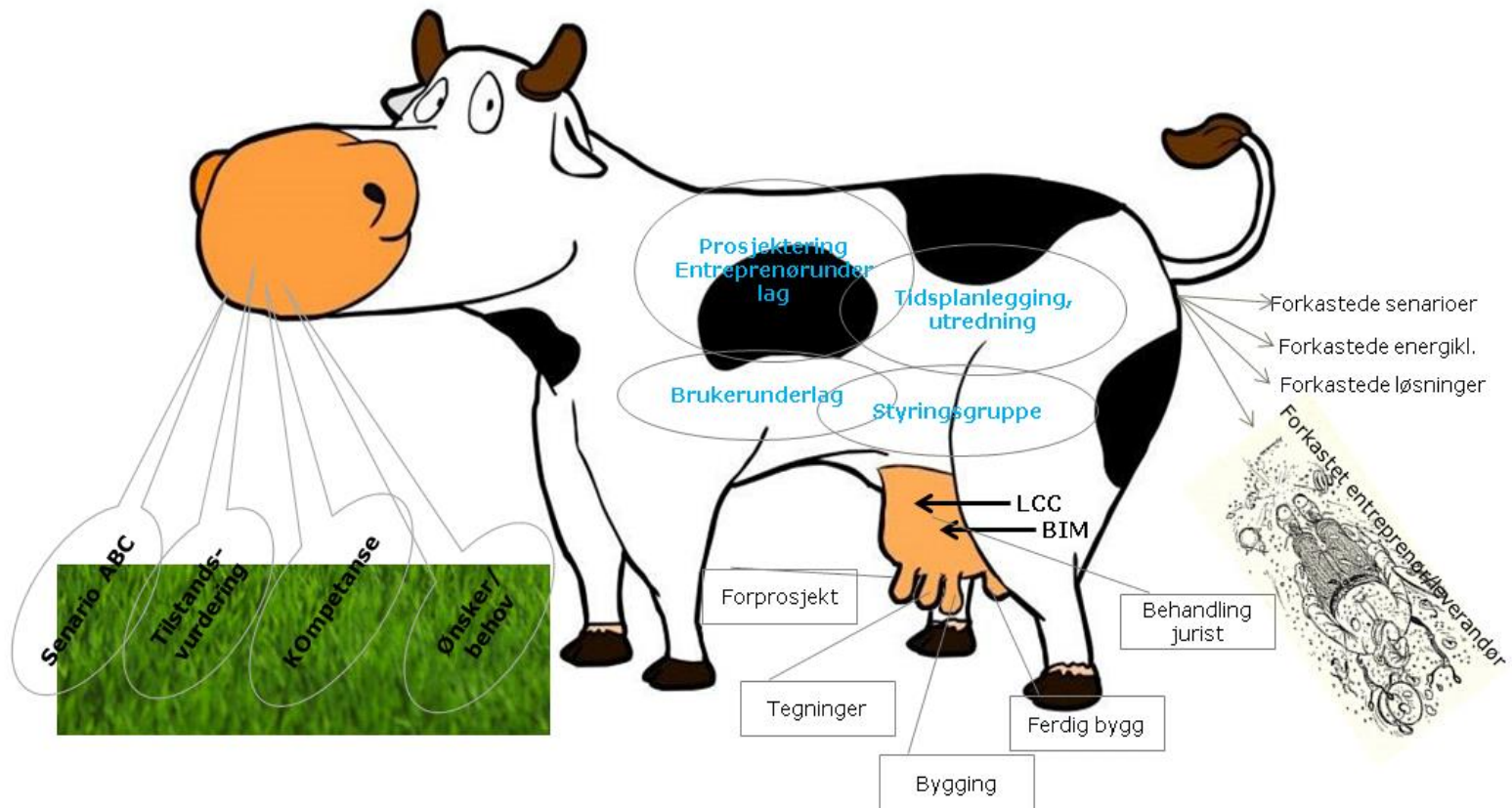
- Være tydelig på at definering av behov er viktig for å lykkes
 - Konferansen kan lett bli overfladisk
- Få leverandørene til å se nytten av å delta
- Risiko med å dele gode løsninger for leverandøren
 - Gode ideer kan stjeles av andre
 - Kommunen må være tydelig på at vi ikke deler informasjon som leverandøren anser som bedriftshemmeligheter
- Kostnads- og tidkrevende

Anbud i Lyngdal

- Anskaffelse av arkitekt
 - Konkurranspreget dialog
- Anskaffelse av prosessleder/fremdriftsplanlegger
 - Begrenset anbudskonkurranse
- Anskaffelse av leverandørgruppe (rådgivere, entreprenører)
 - Begrenset anbudskonkurranse med sikte på en partneringmodell (Lyngdalsmodellen).

Videre dialog i gjennomføring av prosjektet

- Tidlig involvering og reelle påvirkningsmuligheter for brukerne/eier i hele utformingsprosessen.



Følge opp og evaluere

- Følge prosessen tett og være proaktive med mål om å oppnå innovasjon
- Gevinstrealisering
 - Måle oppnådde gevinster
- Lage sluttrapport og evaluere prosjektet
 - Sammenligne resultatet med Falun
 - Evaluering av mål innenfor følgende områder
 - Kostnadseffektivt bygg med bærekraft over tid
 - Byggetidseffektivt
 - Energieffektivt og klimasmart bygg
 - Ytelseseffektivt
 - Drift- og vedlikeholds effektivt
 - Personaleffektivt
 - Brukerpositivt